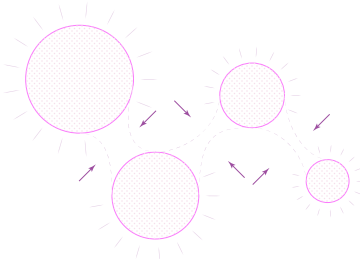


2024-5 PORTFOLIO  
ANDREW RESTREPO  
SELECTED WORKS

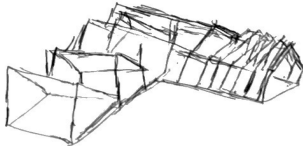


CONTENTS

1



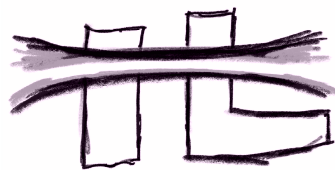
2



3



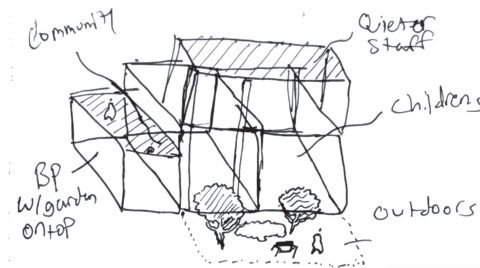
4

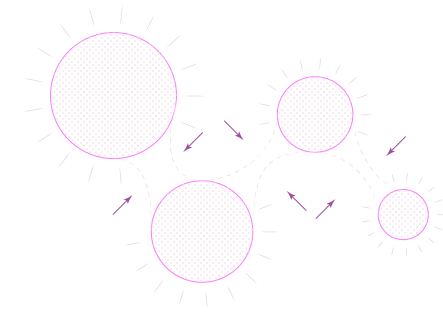


5



6





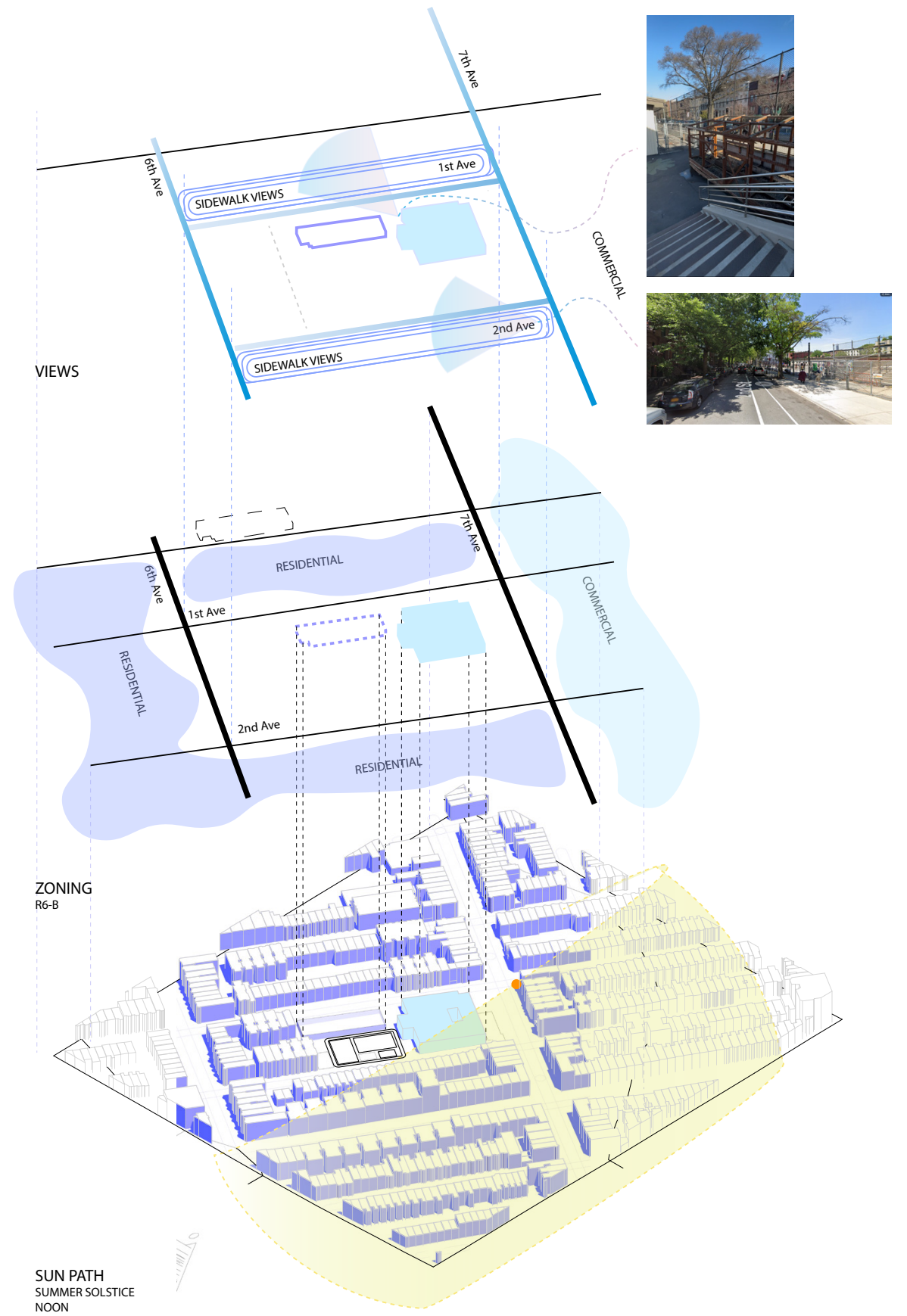
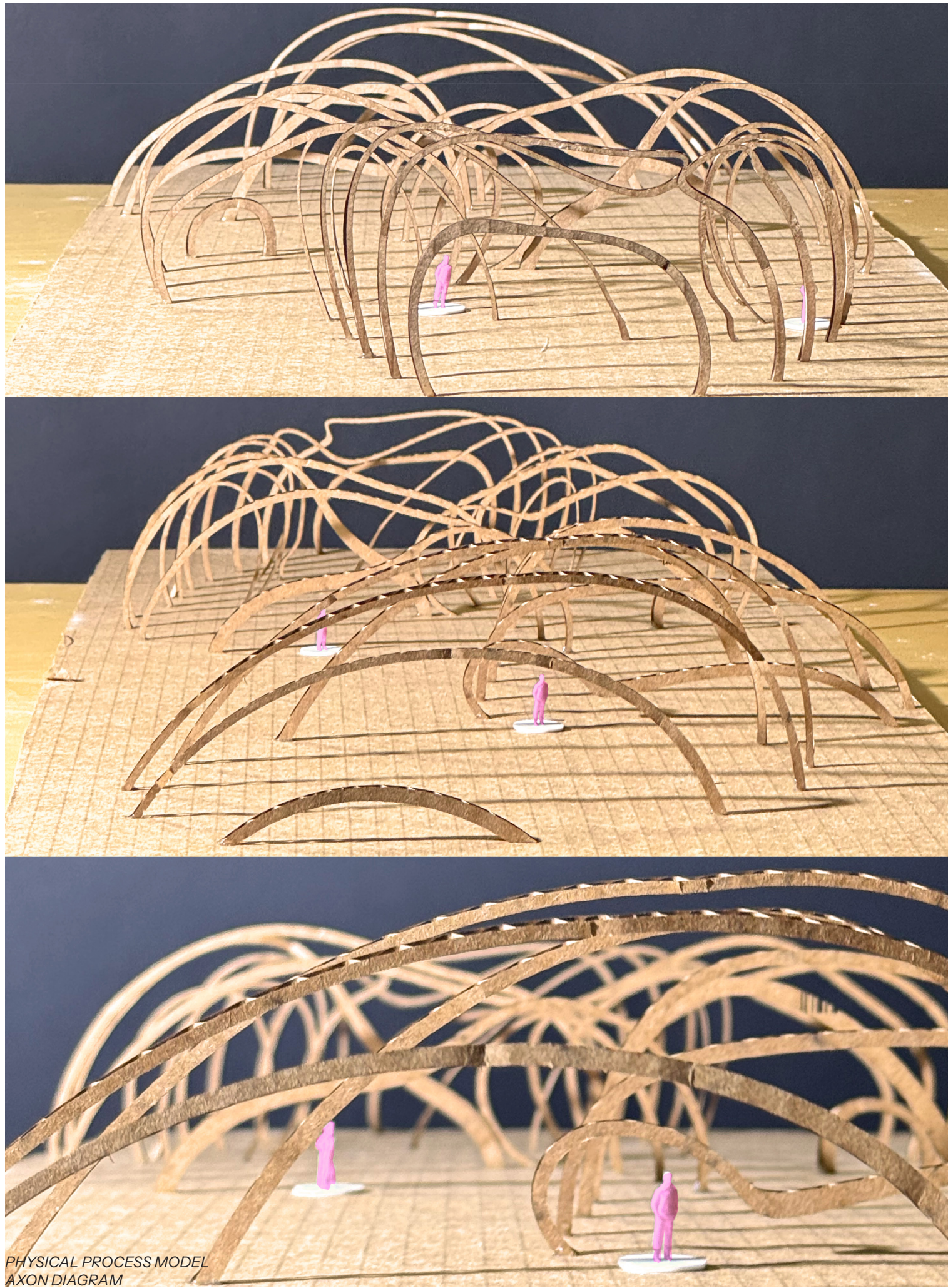
## 01 WANDERWOOD

SPRING 2025

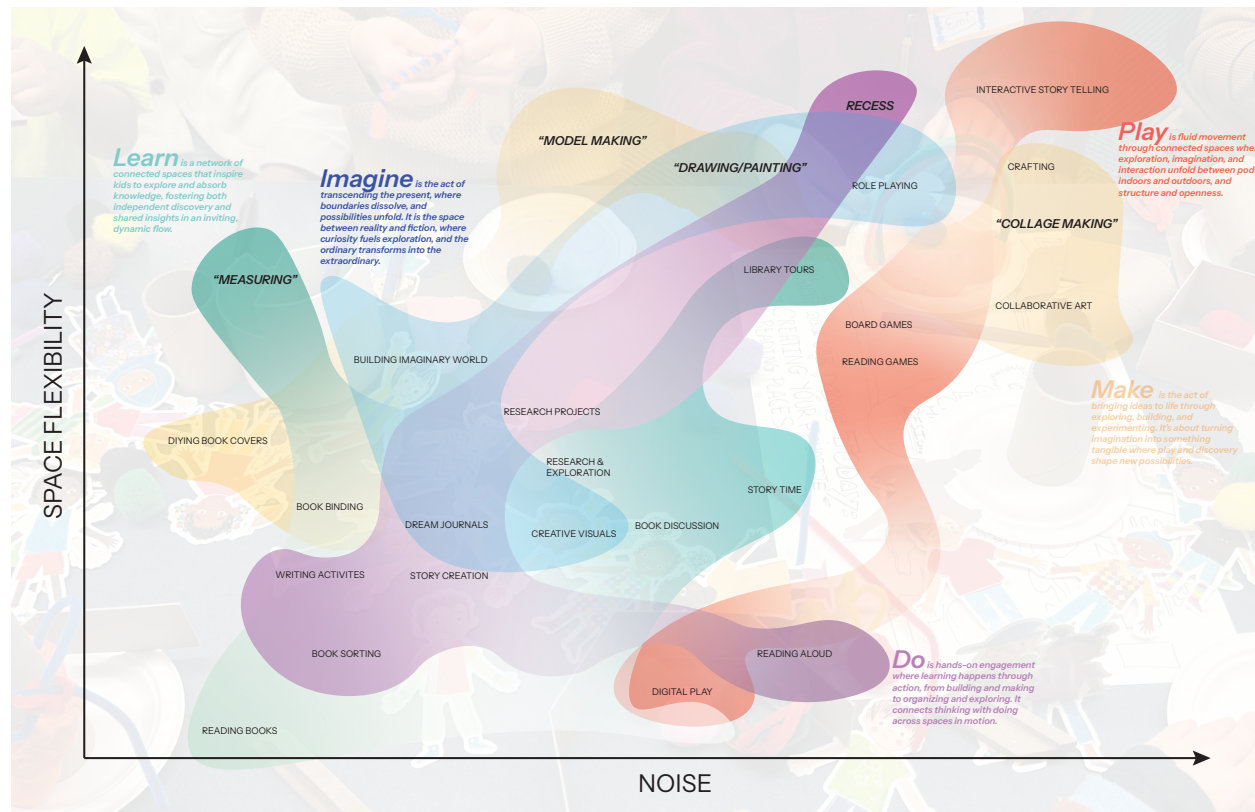
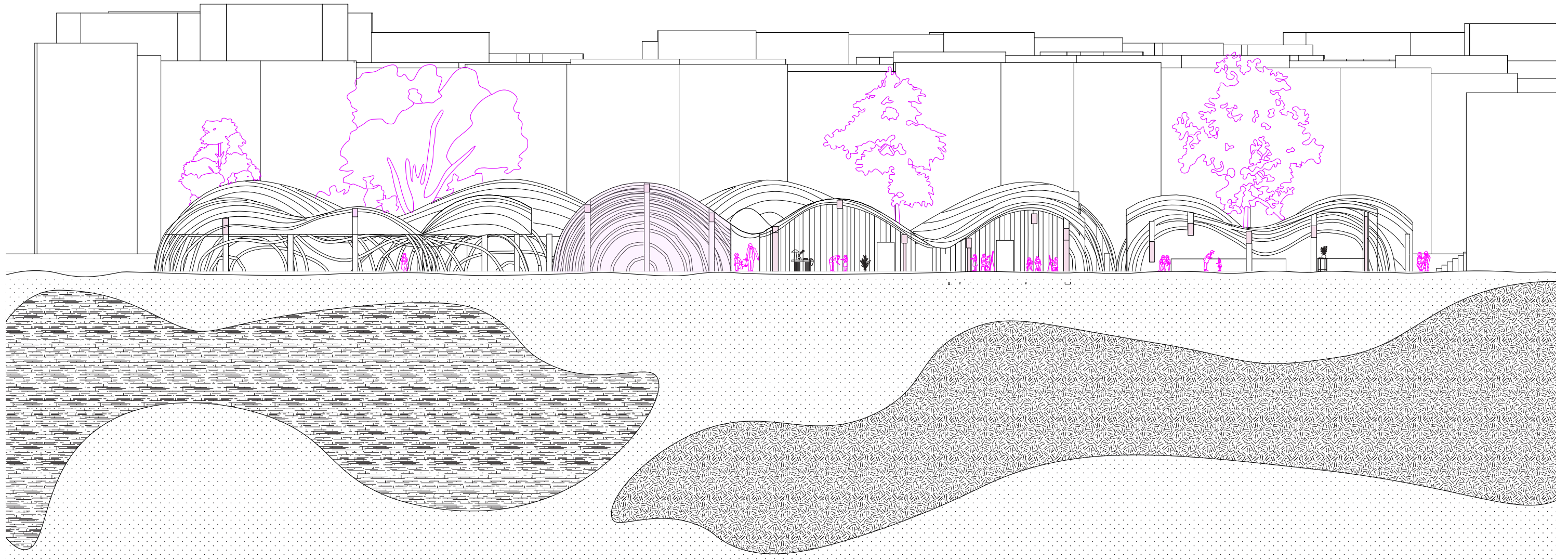
### FINAL PROPOSAL

Wander Wood reimagines P. S. 321's library as a series of connected timber pods linked by a dynamic wooden spine. Enclosed pods house reading and tech spaces, while open ones create sheltered out door areas. The wooden spine serves as both pathway and structure, with varying dimensions, curved surfaces, and filtered light creating an environment that encourages exploration. Mass timber elements provide structural integrity while creating a warm atmosphere, transforming the library from a static space into an *active learning landscape where physical movement reflects intellectual discovery.*





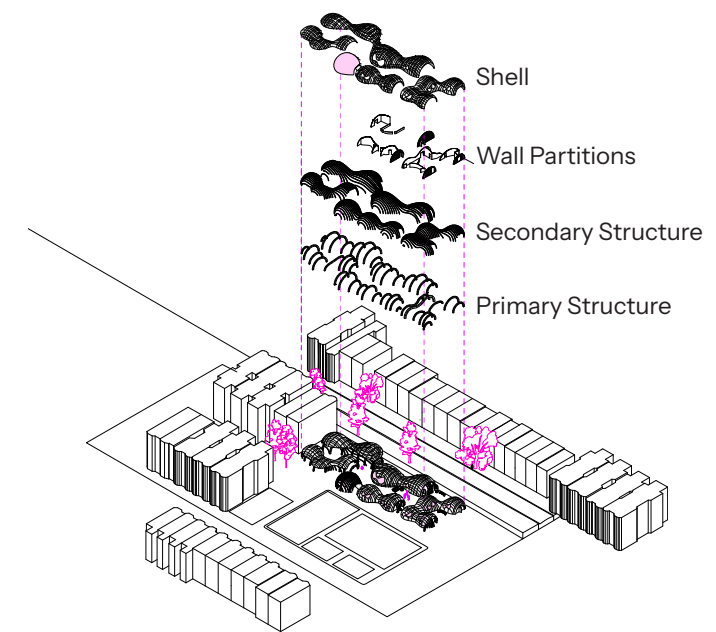




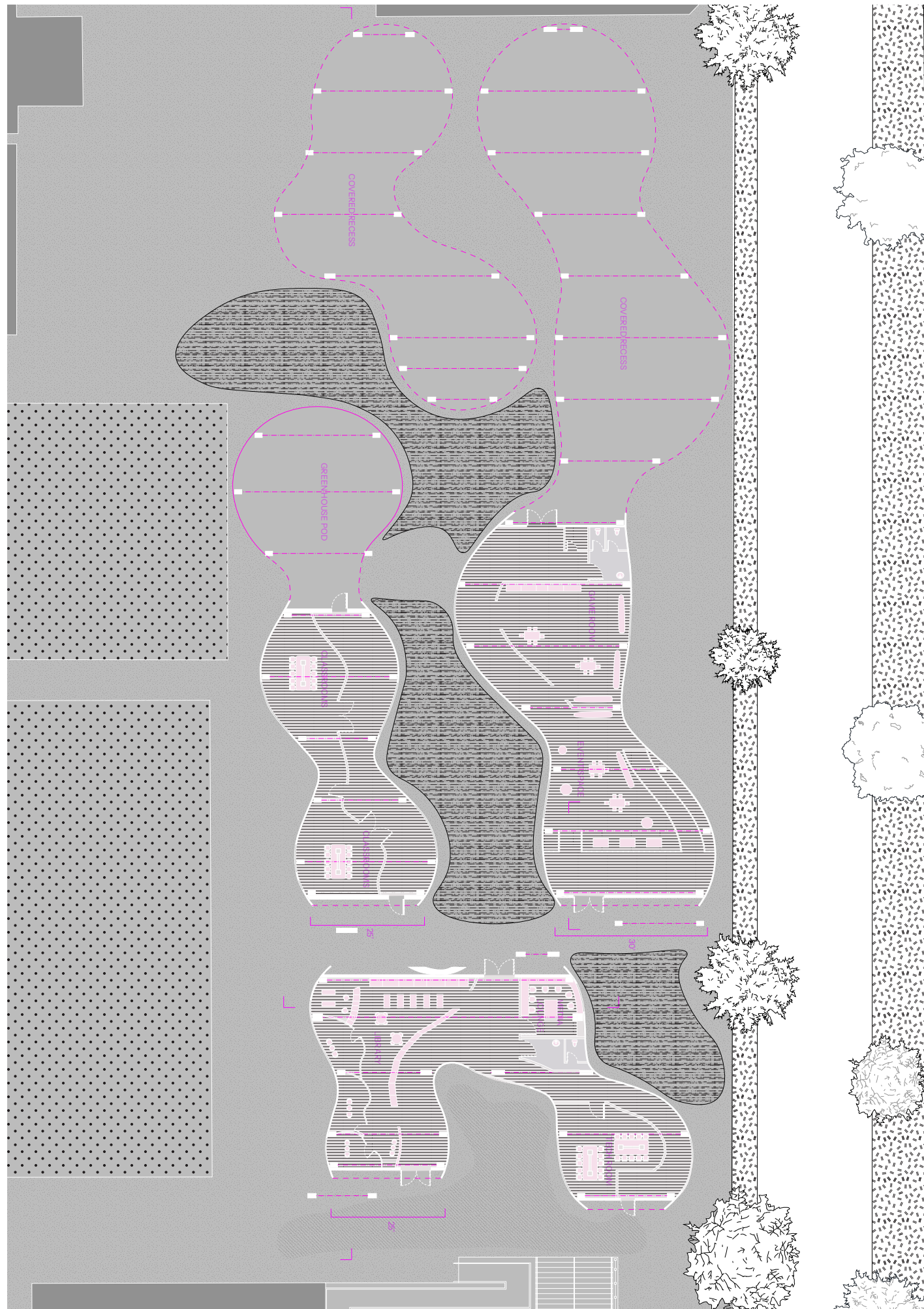
COLLAGE  
DIAGRAM  
PHYSICAL MODEL

### Spatial Analysis Framework

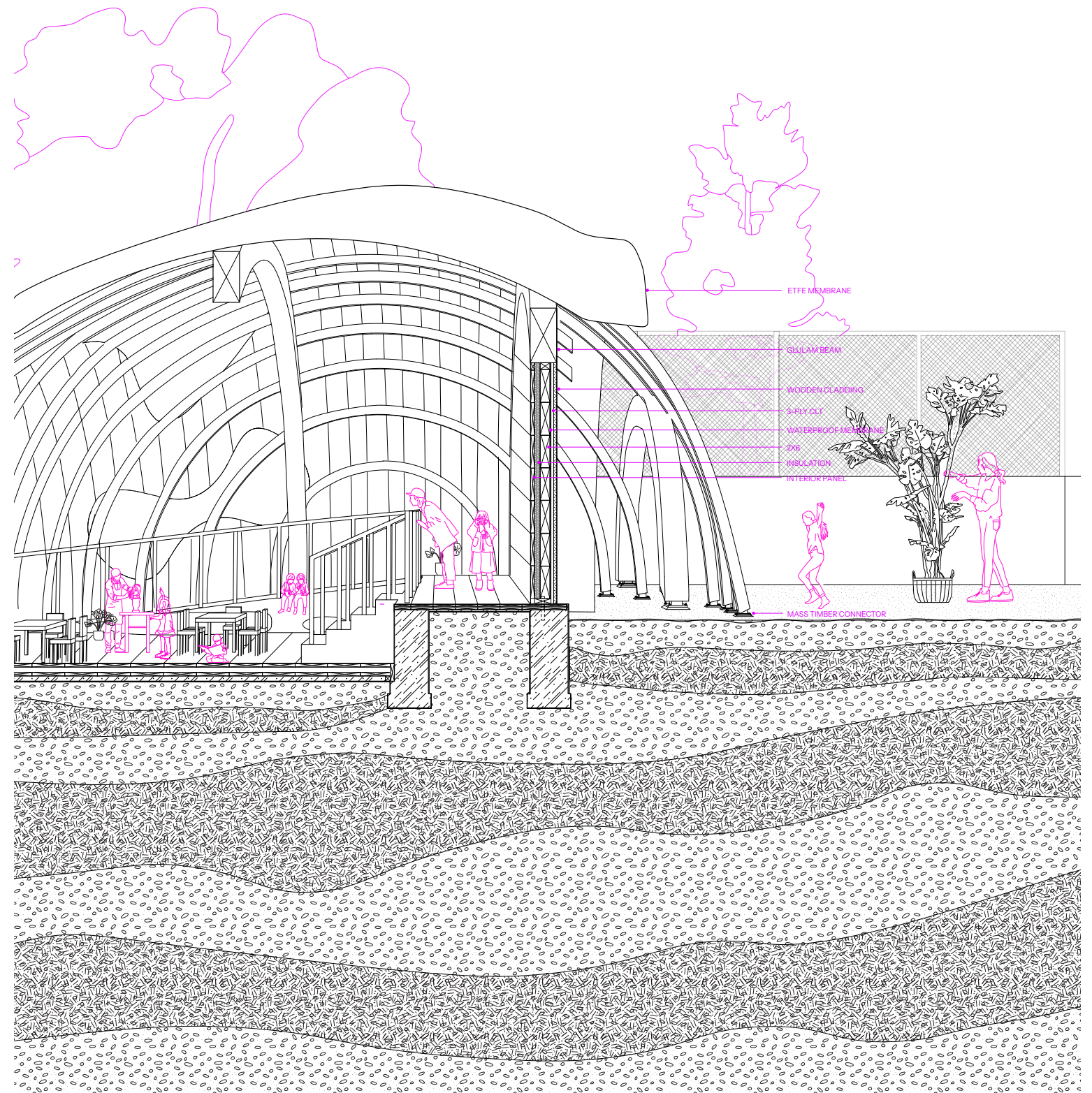
A strategic matrix maps student activities across space flexibility and acoustic tolerance parameters. This analytical framework positions diverse learning behaviors within the flexibility-noise spectrum, revealing natural activity clusters that generate three distinct pod typologies. The systematic approach transforms quantified behavioral patterns into architectural programming, directly informing pod sizing and adjacencies.



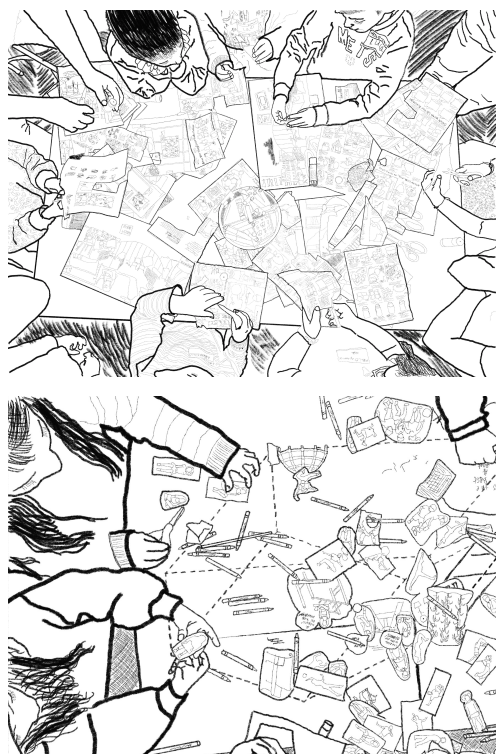




FLOOR PLAN  
DETAILED SECTION





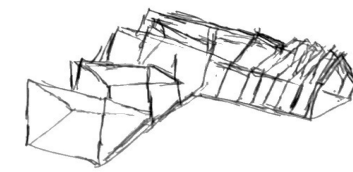
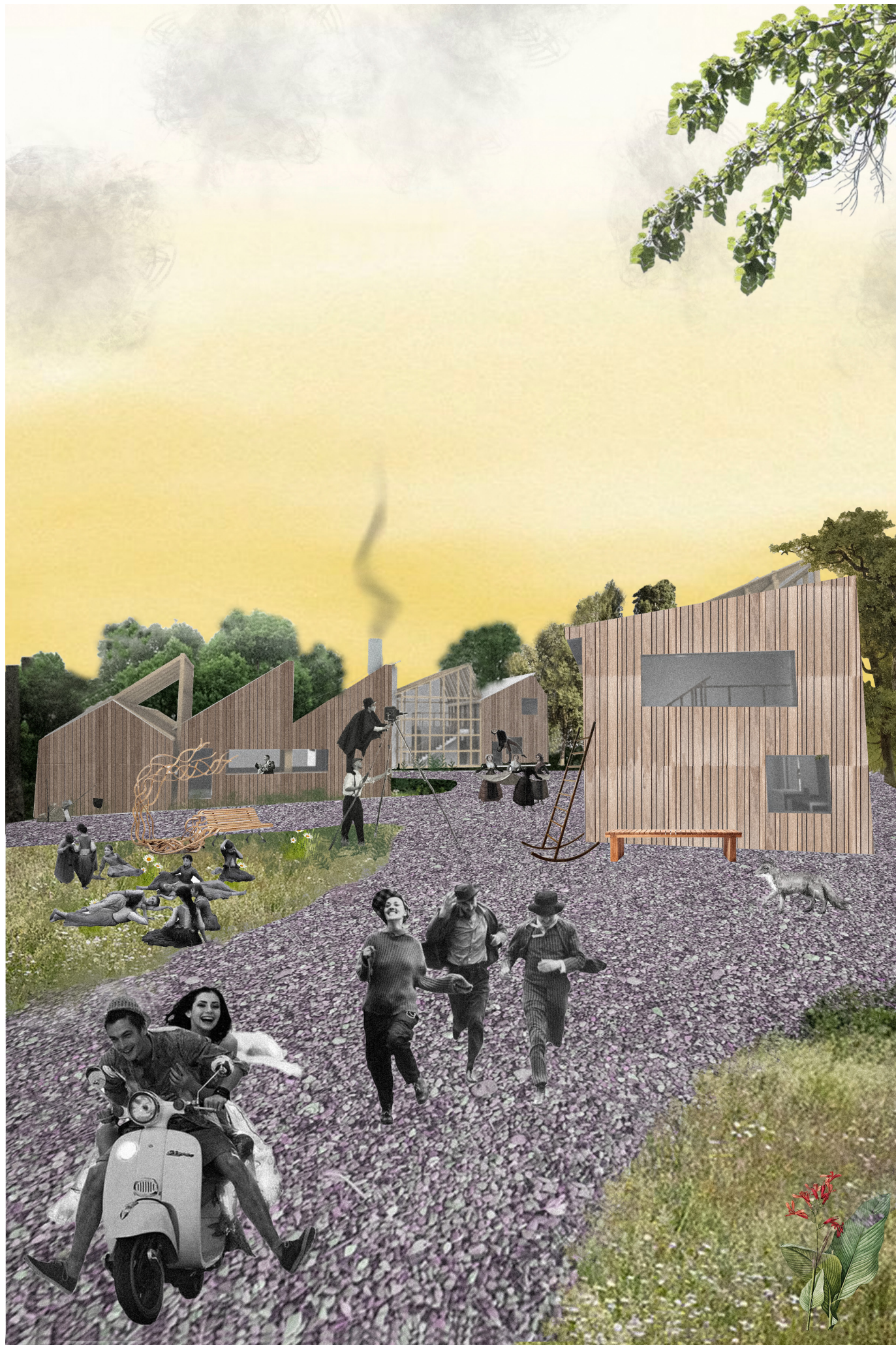


## REFLECTION

Through this process I learned how patterns of behavior can directly inform architectural design in both precise and meaningful ways. The matrix evolved from a simple diagram into a tool for shaping experience, guiding the creation of pods as dynamic, responsive spaces rather than fixed rooms. This project revealed that architecture is more than form; it is about crafting atmospheres that encourage movement, focus, and exploration, ultimately creating spaces that adapt to and enhance the ways people learn and interact.







## 01 BETWEEN STUDIOS RESIDENCY

FALL 2024

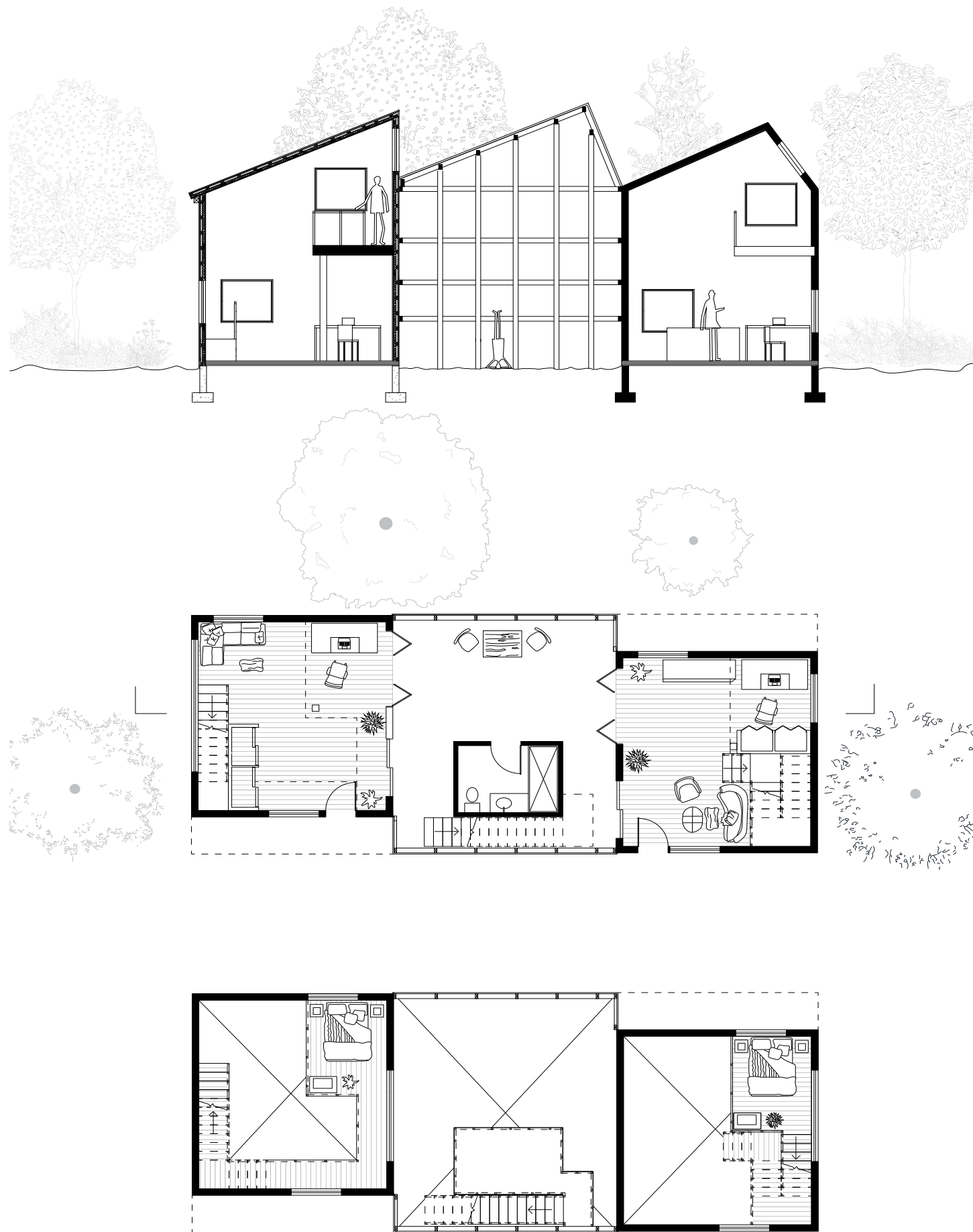
### FINAL PROPOSAL

Between Studios Residency is a design for a rural artist retreat at Art Omi, featuring two studio volumes, a translucent connector with a rooftop terrace, and a barn-inspired communal space. The project explores rhythm, contrast, and material honesty through sawtooth forms, raw gravel surfaces, and flexible garage-door entries. Together, the spaces create an environment *where solitude, shared experience, and creative work intersect within the landscape and daily life*





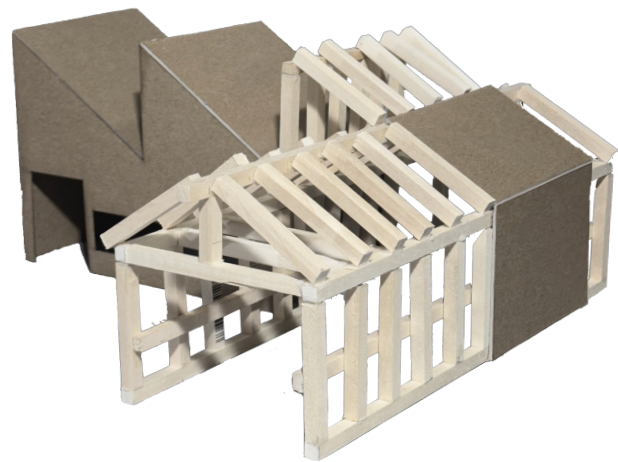




SECTION  
FIRST & SECOND  
FLOOR PLAN  
DIGITAL COLLAGE







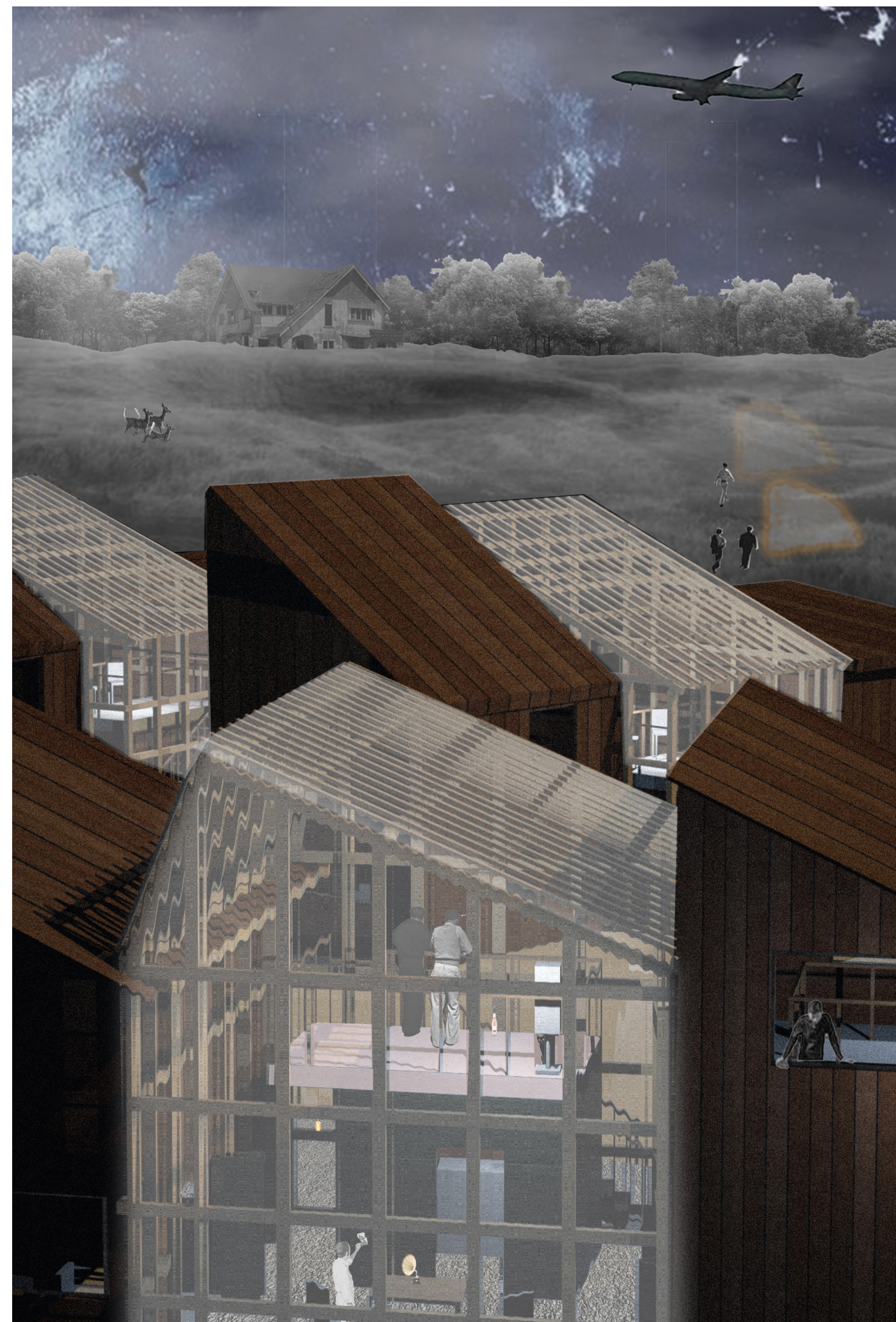
PHYSICAL MODEL  
COMMUNAL SPACE  
COLLAGE



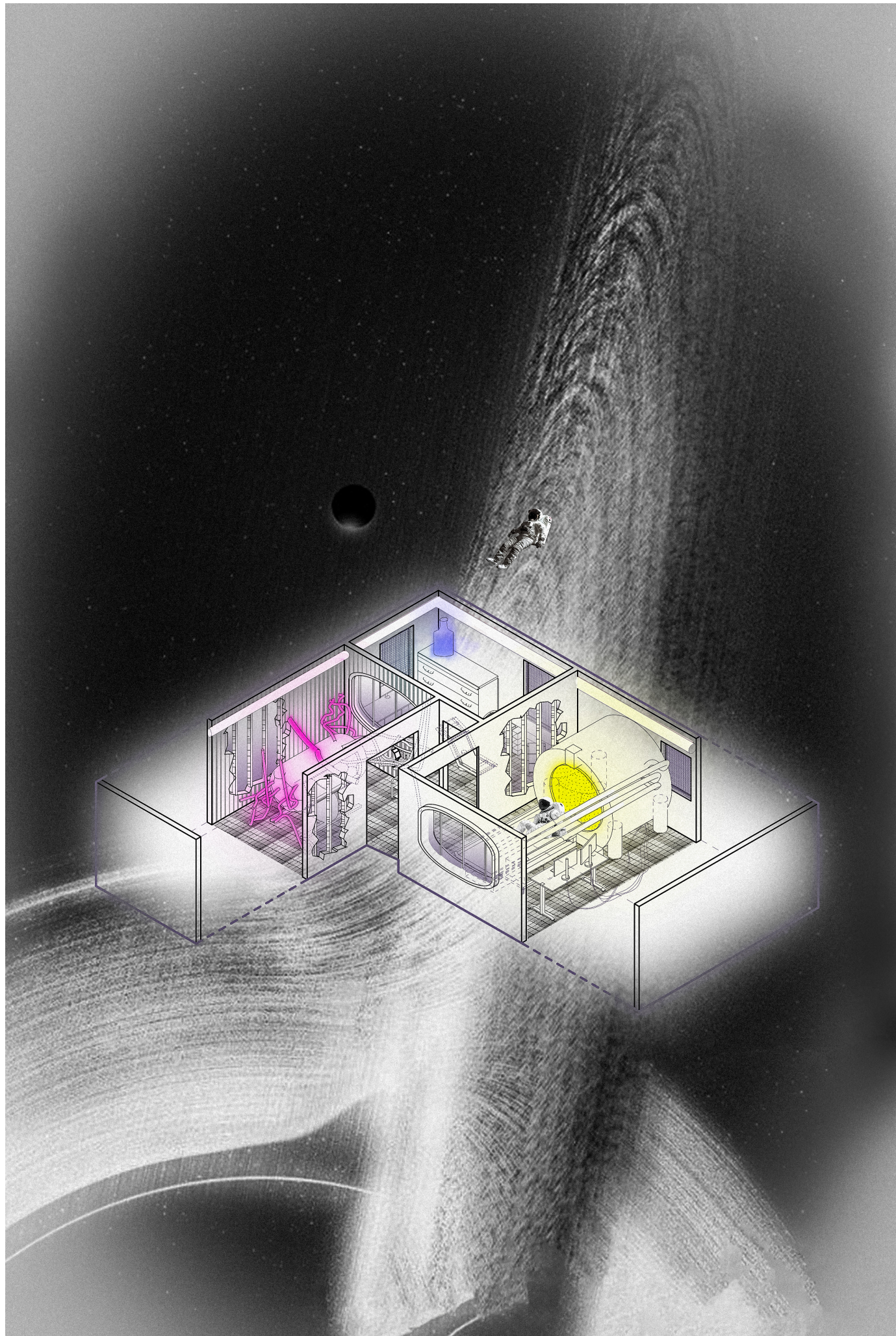




SITE  
AXON  
PLAN  
SECTION







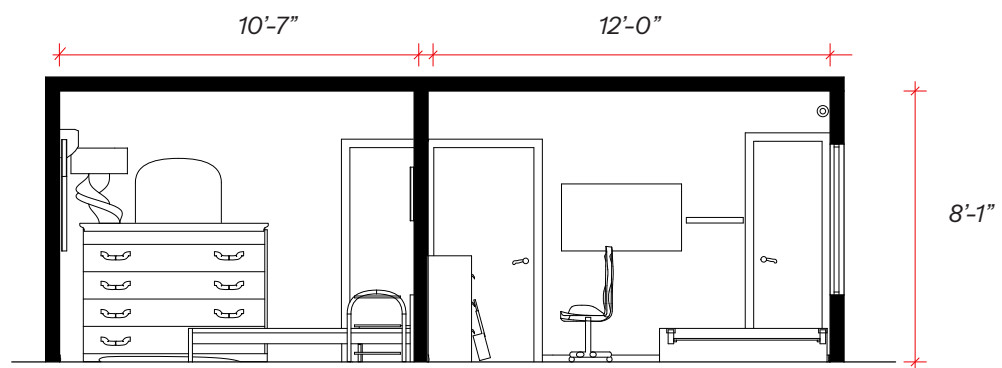
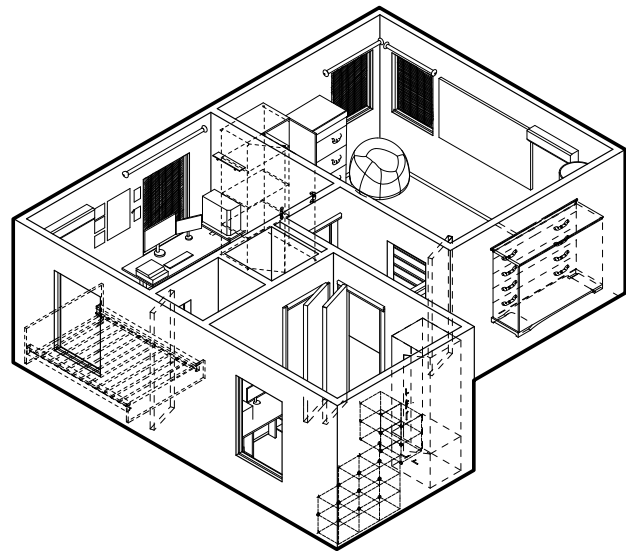
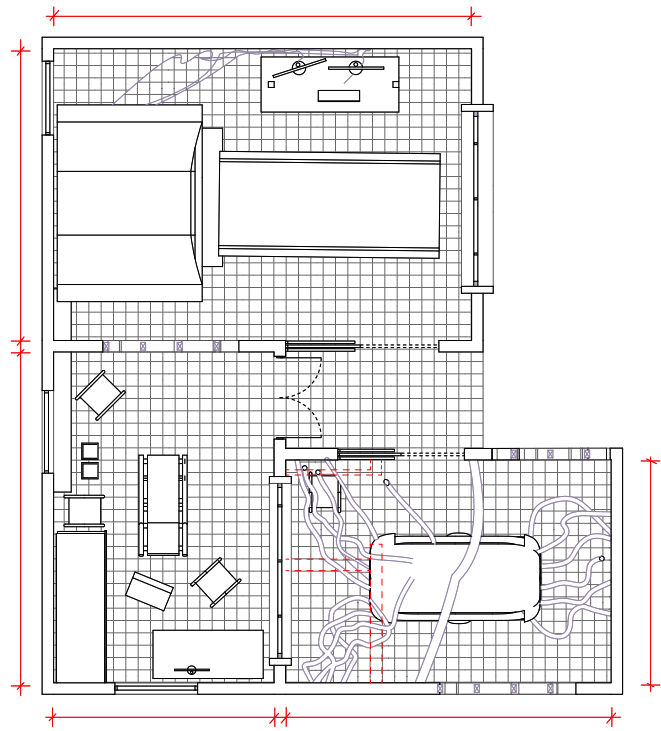
## 01 FAMILIAR/FOREIGN

SPRING 2025

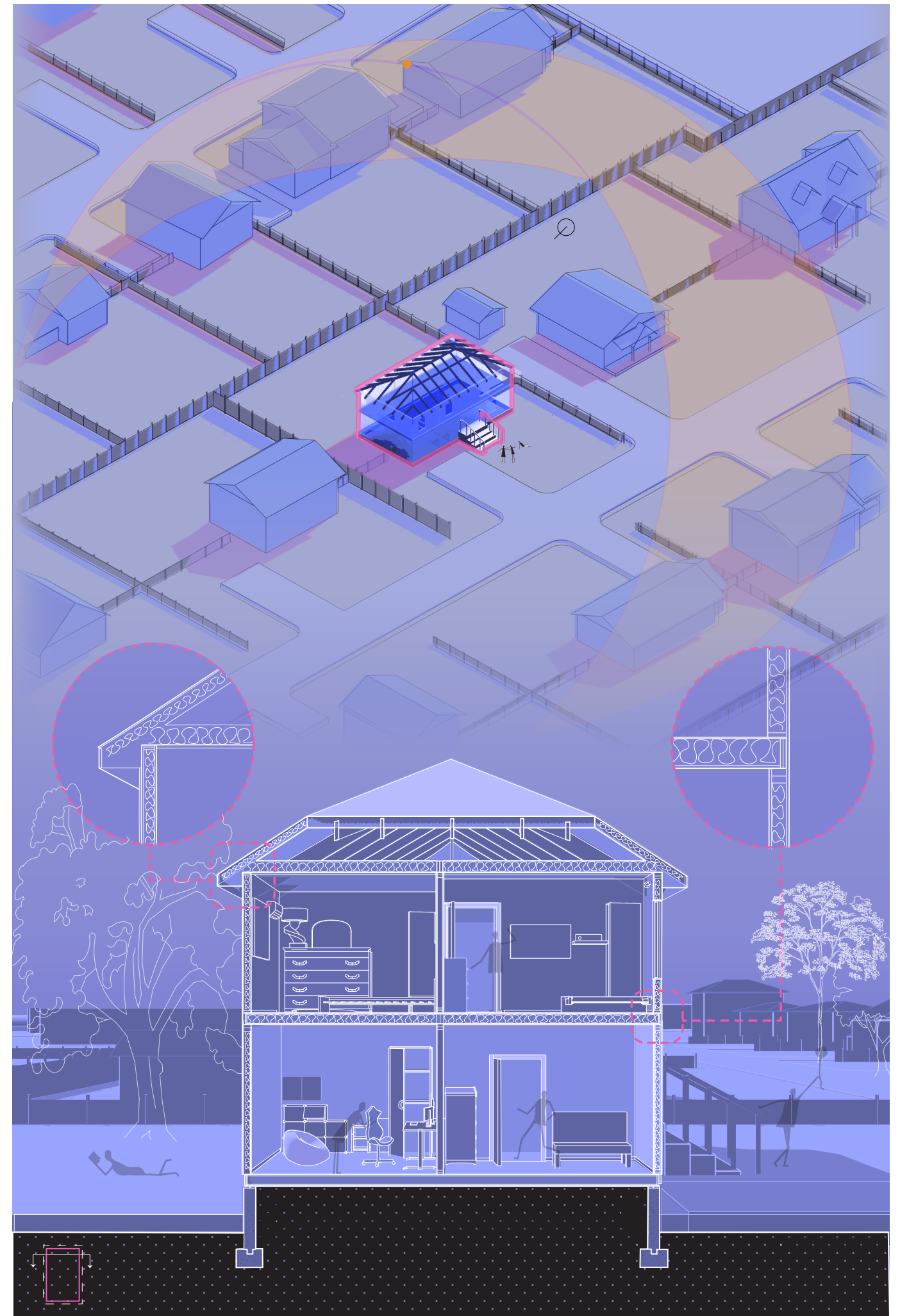
### SPECULATIVE DESIGN STUDY

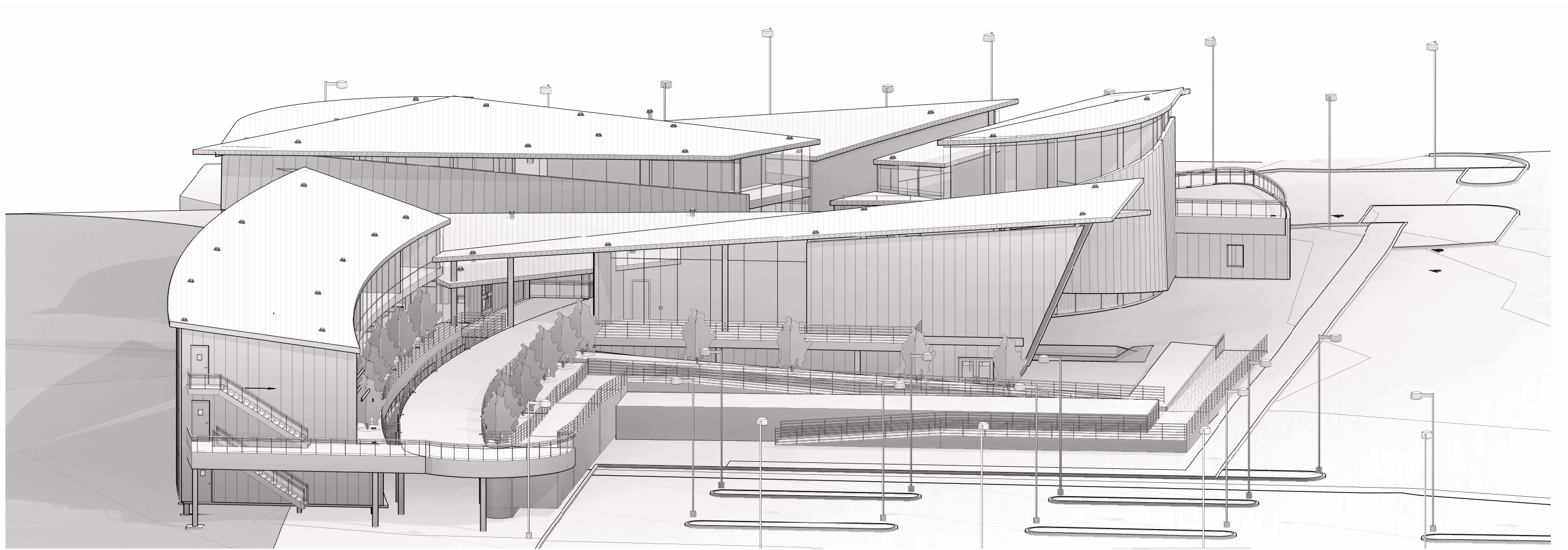
This project transforms familiar domestic spaces into speculative futures. Beginning with three documented rooms from my home, I reimagined these intimate spaces as a futuristic laboratory with advanced scanning technology. The work progresses through comprehensive site analysis and environmental studies, culminating in a detailed sectional perspective that reveals the relationship between existing context and imagined possibility.





FLOOR PLAN  
AXON  
SECTION  
DIAGRAM



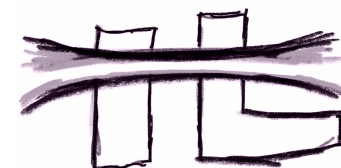


## 01 HARMONY IN ASCENT

SPRING 2024

### FINAL PROPOSAL

Located on the waterfront of Bay Shore, New York, this 40,000 square foot technology center pioneers the integration of nature and innovation through sustainable design practices. Twin parallel buildings connected by a lush green roof highline create a seamless dialogue between built form and landscape, optimizing lake views and natural light throughout. The thoughtfully designed public and private spaces foster collaboration and community engagement, establishing a vibrant hub that revitalizes Bay Shore as a destination for technological advancement and cultural exchange.

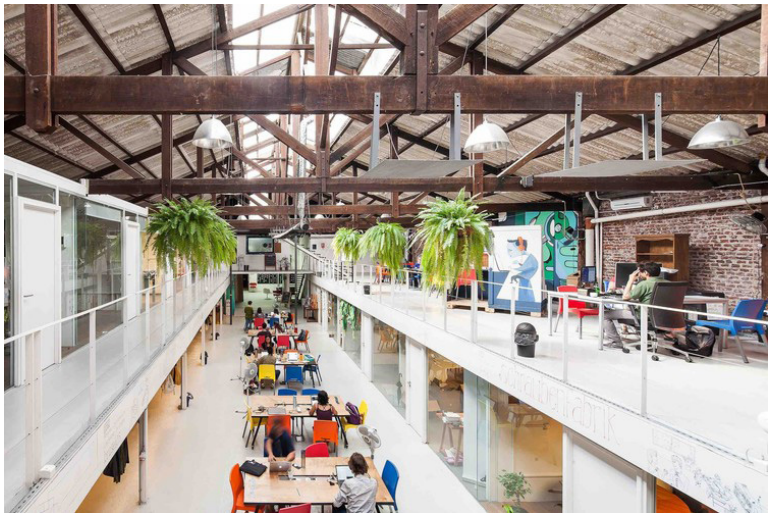
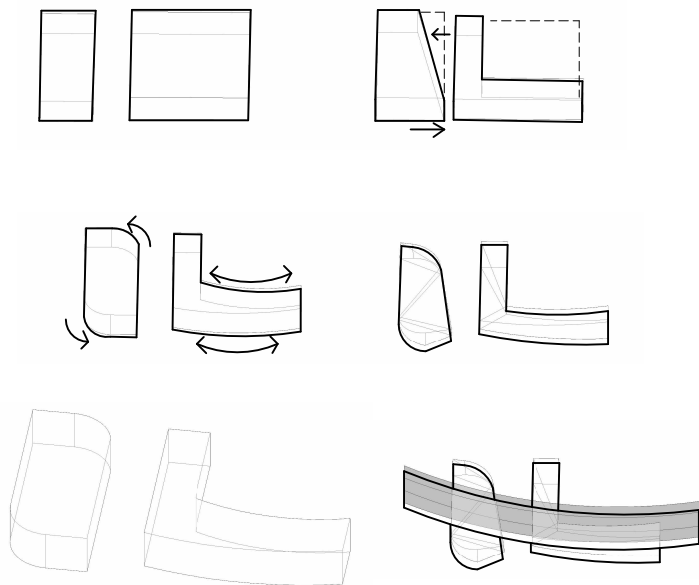




DESIGN PROCESS

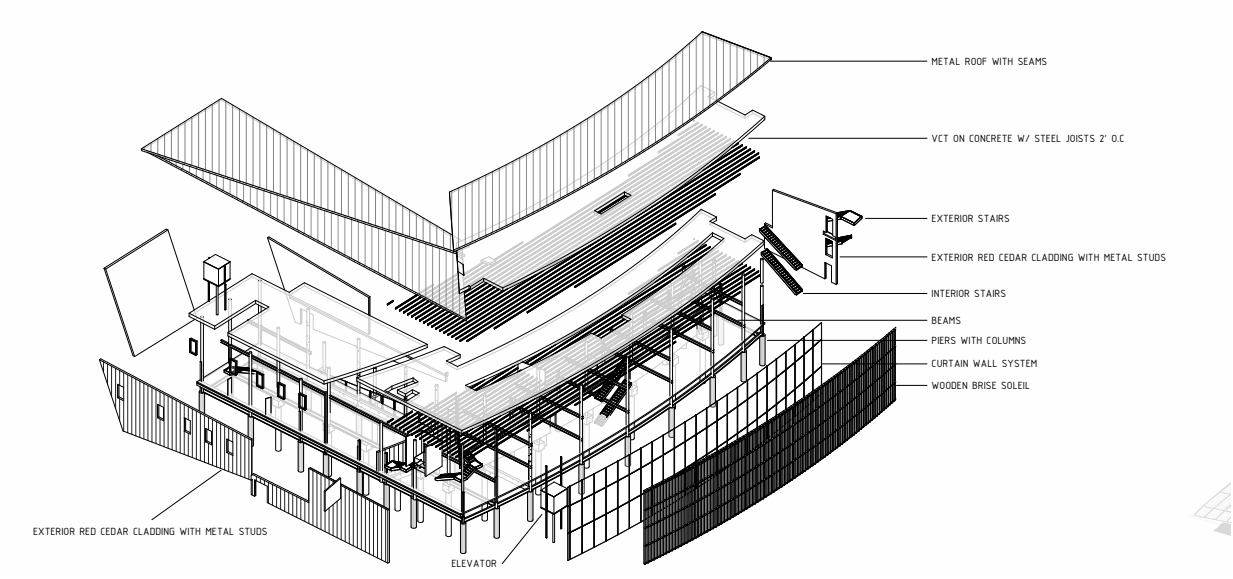
The design began with a simple square and rectangle, exploring balance and proportion. Through a series of studies, these forms were separated and placed in parallel to create a strong spatial relationship. The idea of connection led to the introduction of a highline—a green roof that links the two buildings while also serving as a public space. This move not only unifies the architecture but brings nature into the Experience, turning the space between into a

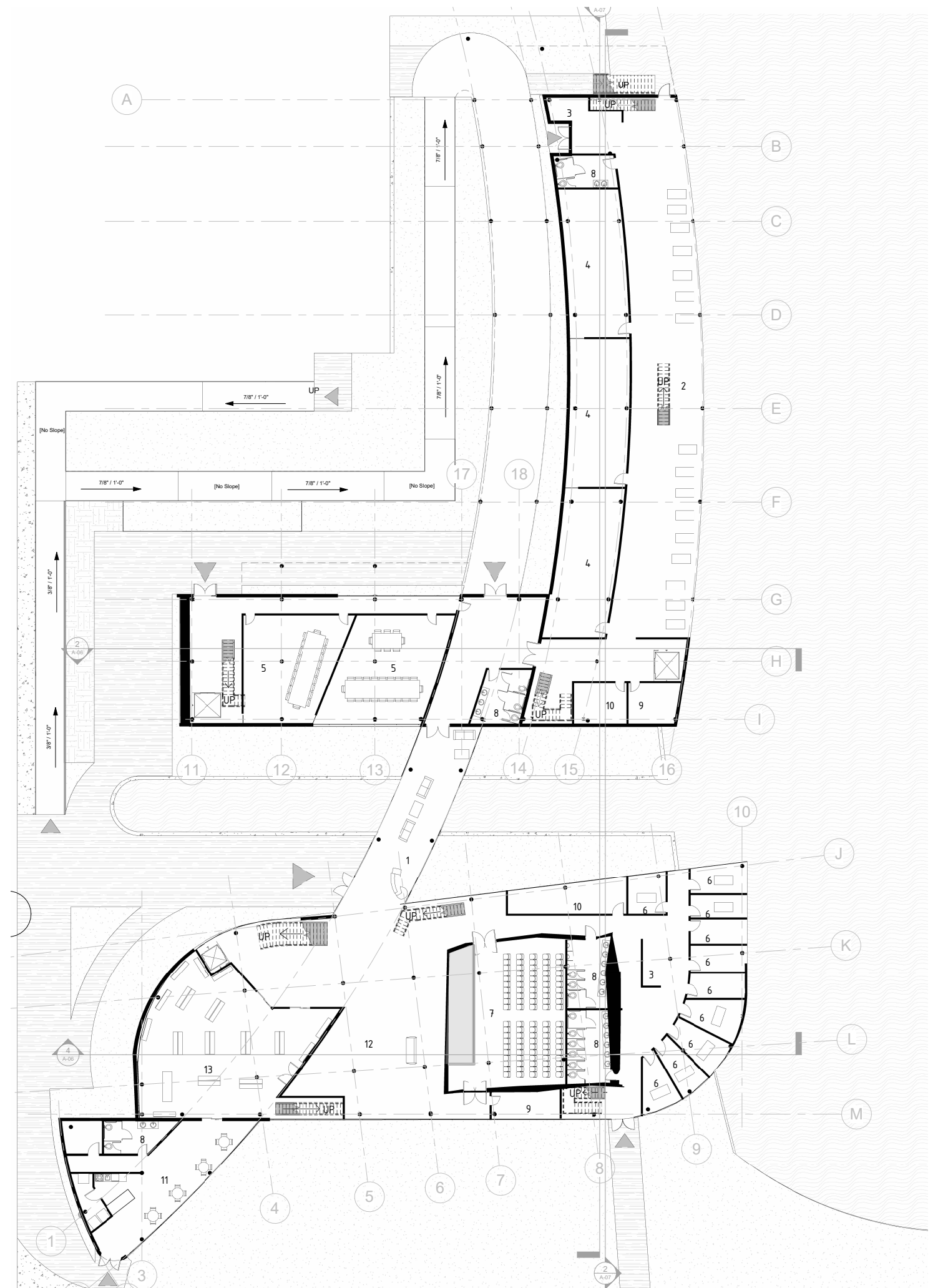
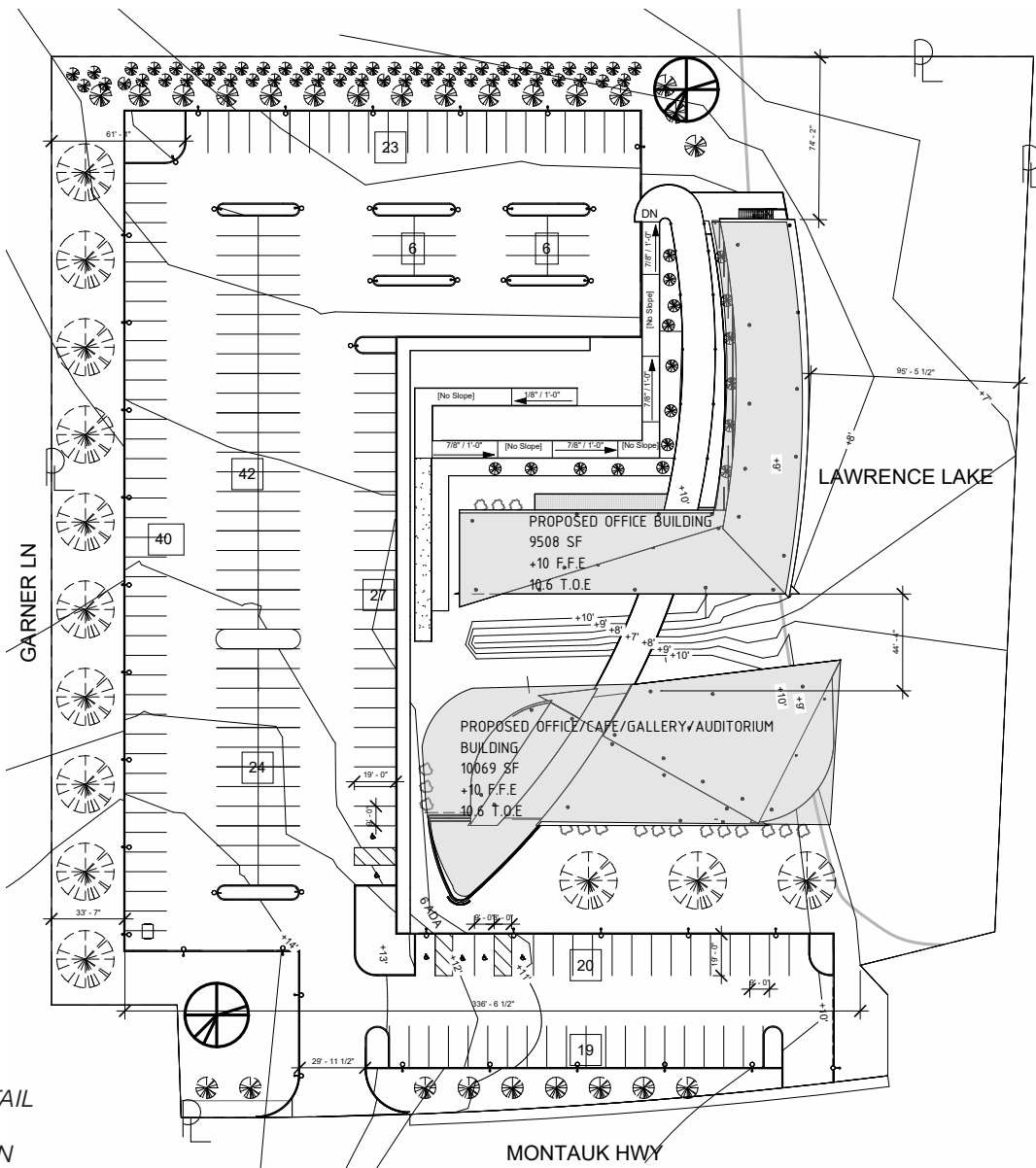
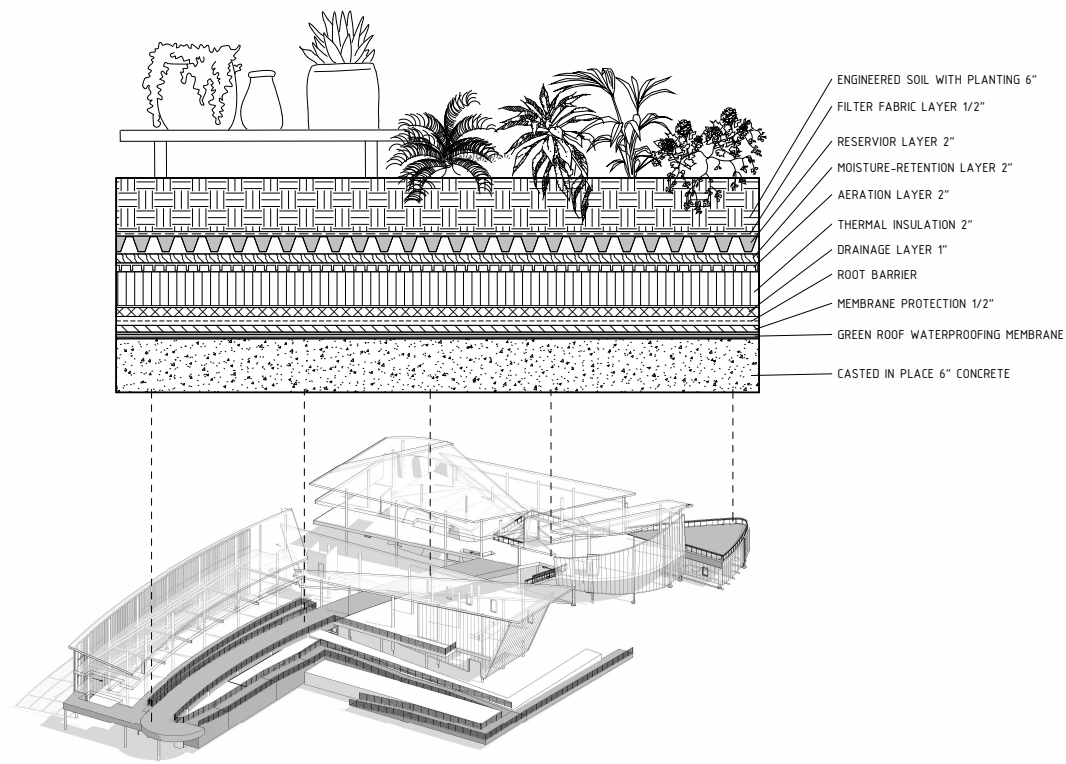
*vibrant, elevated landscape  
that encourages movement,  
connection, and pause.*



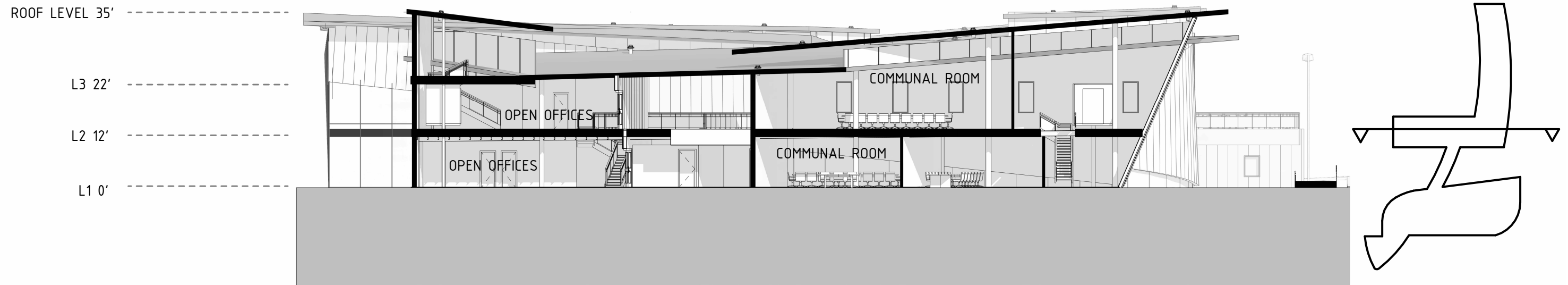
PRECEDENT ANALYSIS

Rooted in the sustainable ethos of the Queens Botanical Garden, the project integrates nature as both a spatial and environmental strategy. A green roof café offers a vibrant social space while reducing heat absorption and managing stormwater. The elevated highline weaves through the architecture, creating a continuous green corridor that promotes walkability and passive cooling. Oriented carefully toward the waterfront, the building maximizes natural ventilation, daylight, and views, allowing the site itself to guide the experience and performance of the space.



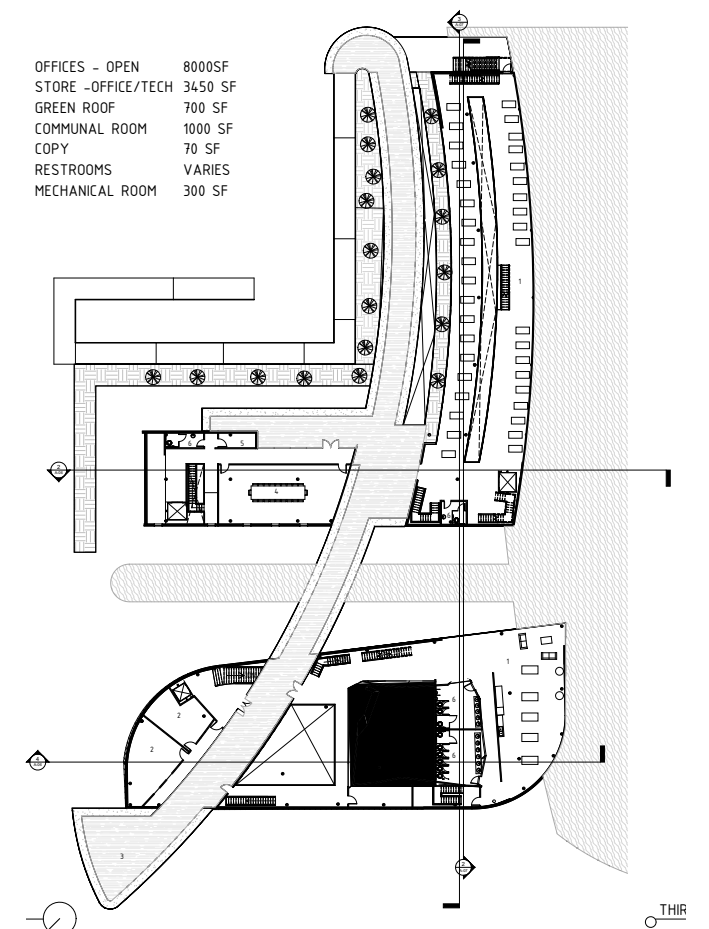
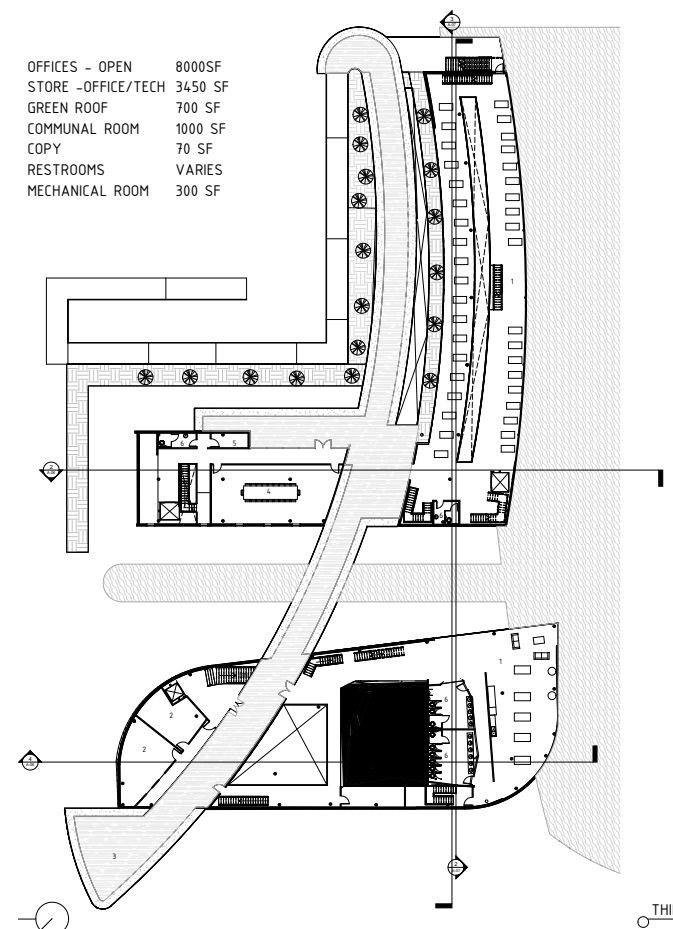


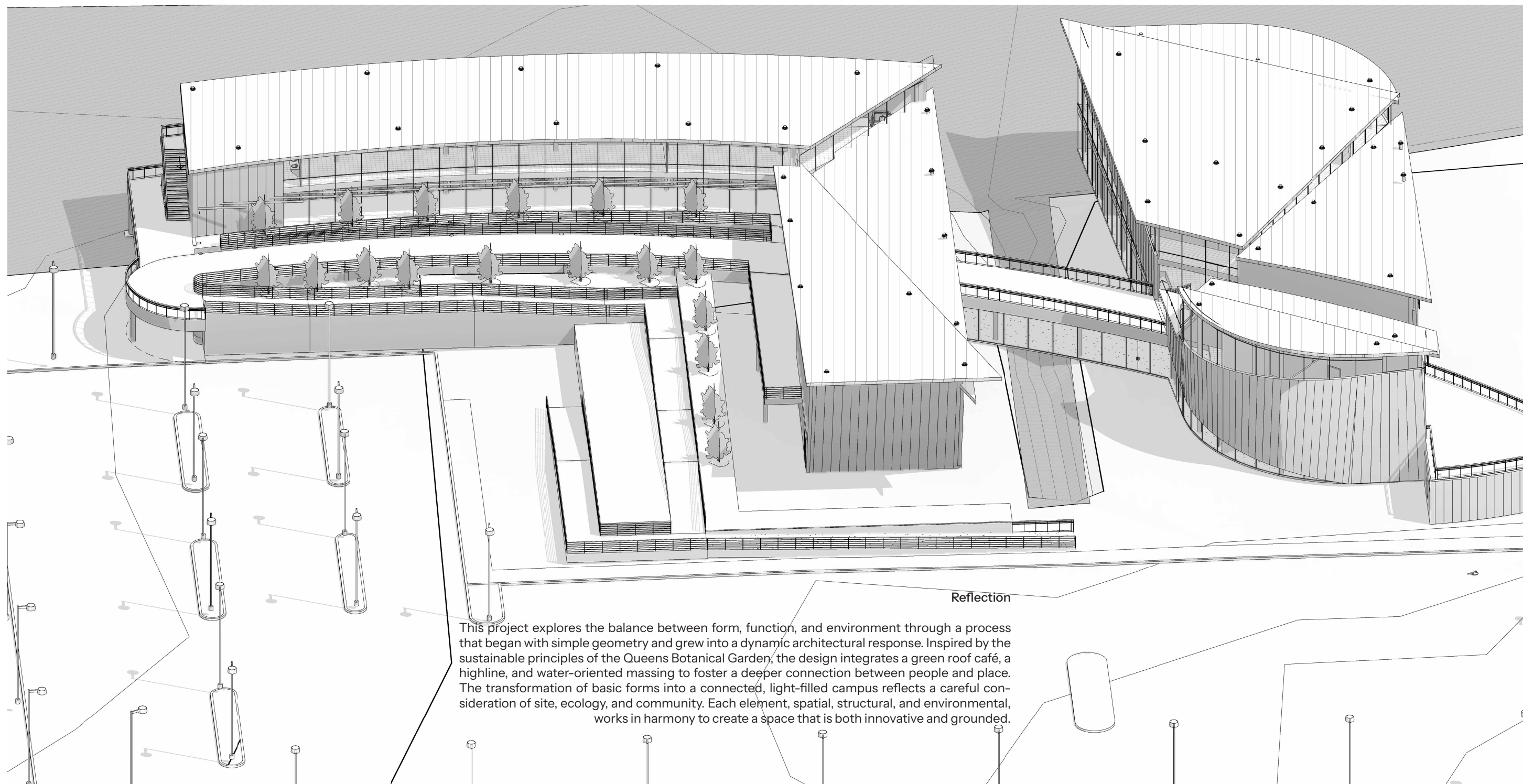


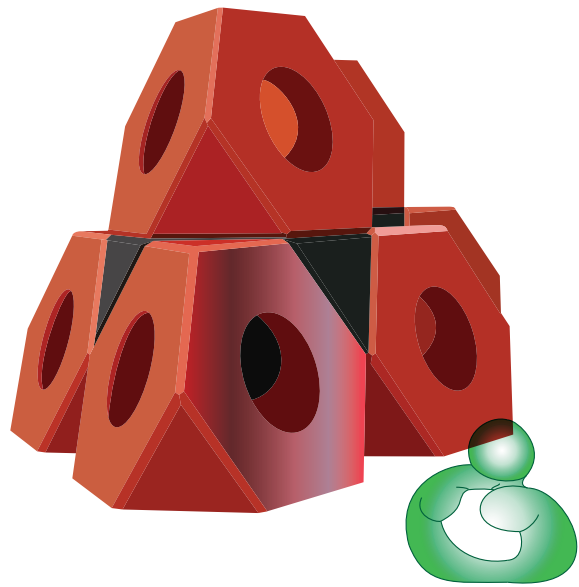


#### ANALYSIS

The section reveals how the architecture responds to both spatial experience and environmental performance. A sloping roof directs rainwater away from the building into strategically placed drains that lead to septic tanks I designed to support the site's sustainability. The drawing also shows the second and third floors, highlighting how the project was shaped not only by design intent but by real-world conditions. Every element was guided by code constraints including F.A.R., water runoff regulations, and building codes, ensuring that the proposal is both visionary and fully grounded in reality.







WHAT SHOULD I EAT TODAY?

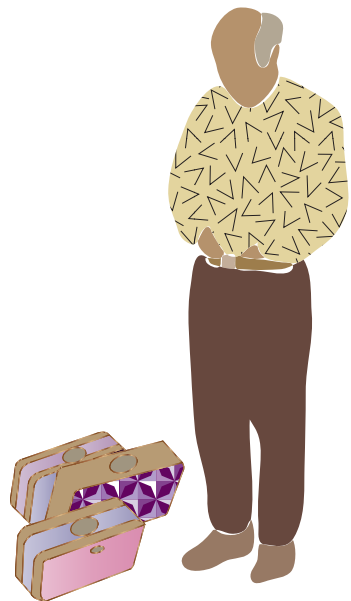


## 01 NOGUCHI STUDIOS

FALL 2024

### PRECEDENT STUDY VISUALIZATION

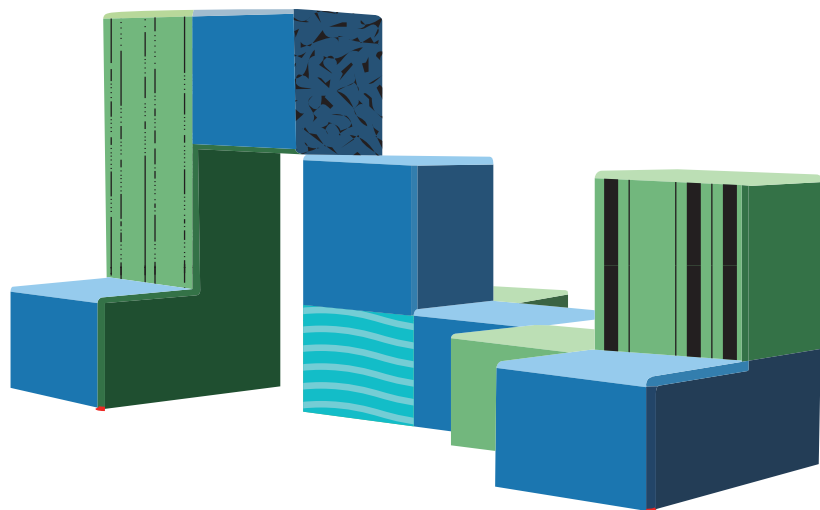
Isamu Noguchi's Apartment was the focus of research for visualization studies, ranging from physical collages to detailed entourage and graphics at multiple scales to illustrations inspired by his sculptural style and artistic philosophy.



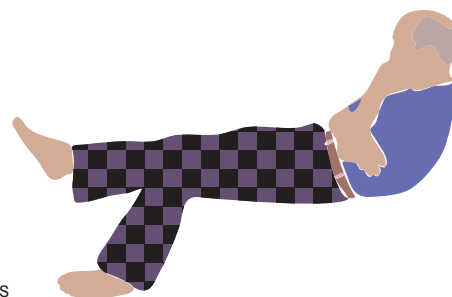
DID I TURN MY STOVE OFF?



I NEED COFFEE



LOOK AT THE BIRDS



I COULD GO FOR A DRINK RIGHT NOW

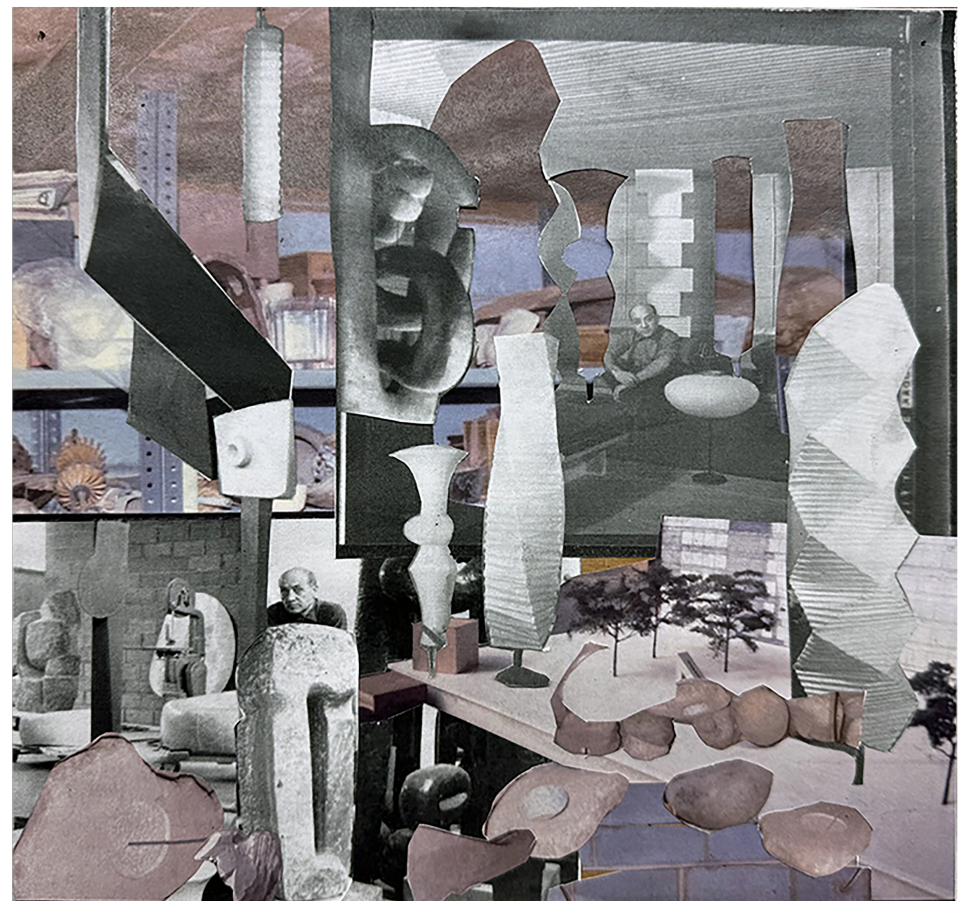




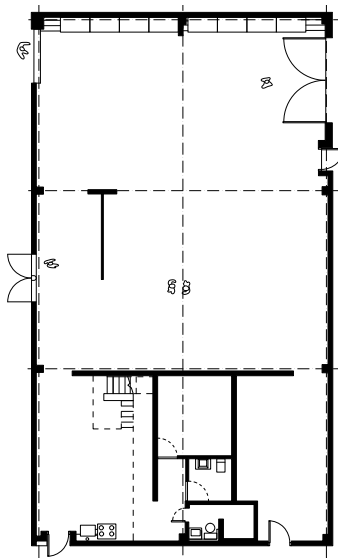
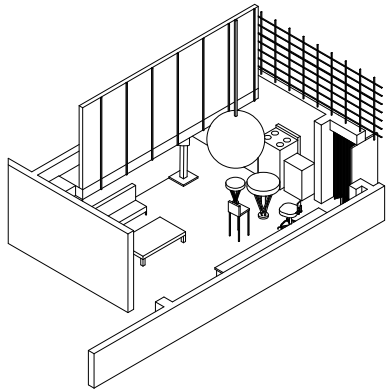
NEW YORK / SUMMER / LIGHT



LESS IS MORE IS MORE



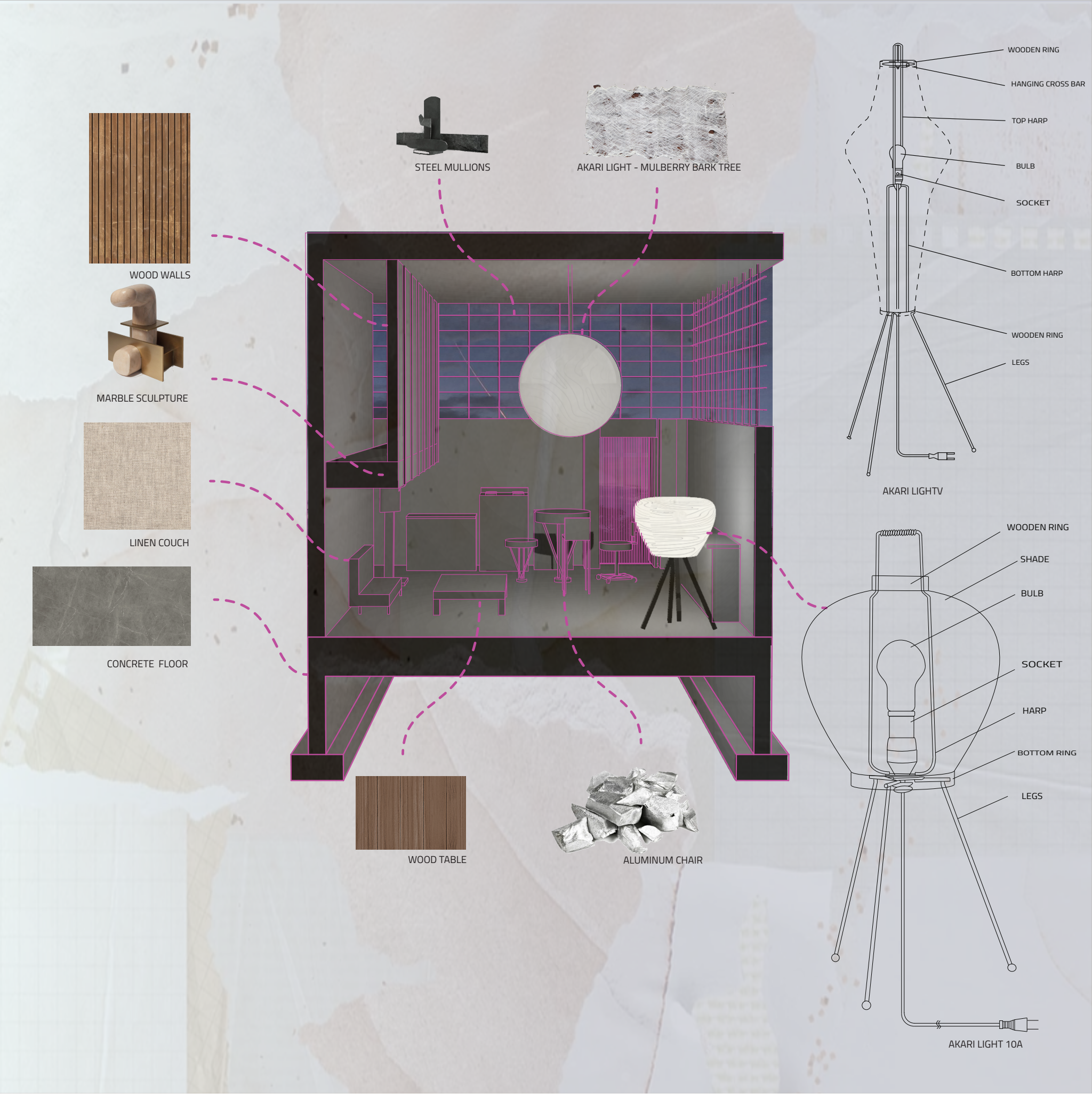
NOTES ON NATURE



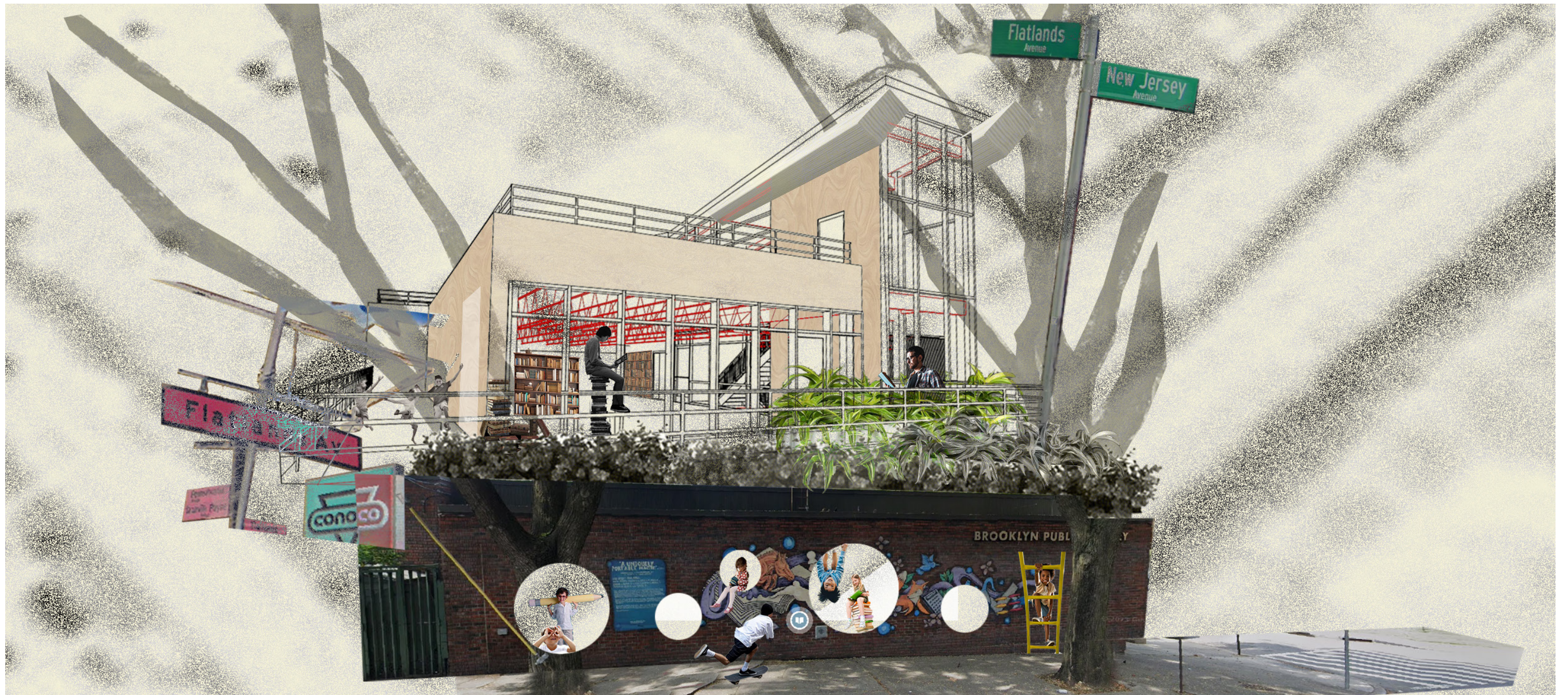
PHYSICAL COLLAGES  
AXON  
FLOOR PLAN  
DIGITAL COLLAGE



The final drawing brought together multiple layers of research into a single image, combining the assembly structure of Noguchi's lamps, an exploration of his material choices, and a perspectival axonometric view of his studio apartment facing the kitchen. This unified composition reflected both the technical precision and sculptural sensitivity of Noguchi's work, merging analysis and atmosphere into one visual narrative.







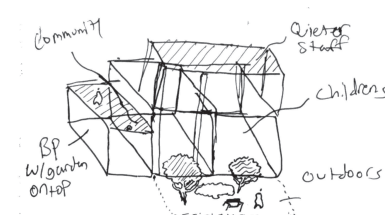
## 01 SPRING CREEK COMMON

WITH HUNTER PEREZ AND JASPER VON-SEEBURG

SPRING 2025

### FINAL PROPOSAL

The Spring Creek Commons would turn this unseen and somewhat forgotten branch library into a truly desirable thirdspace for the Spring Creek community. With a focus on visibility, sustainability and fun, the design directly addresses the needs of both it's staff and it's users, young and old. By incorporating components from the existing structure and introducing new materials, we've strived to consider every aspect of the building process and its possible future utilizations.



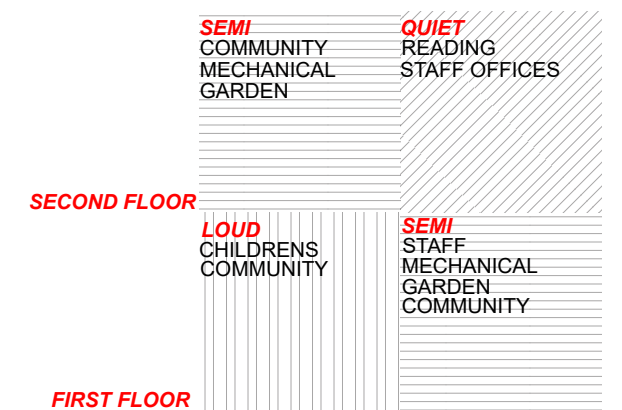
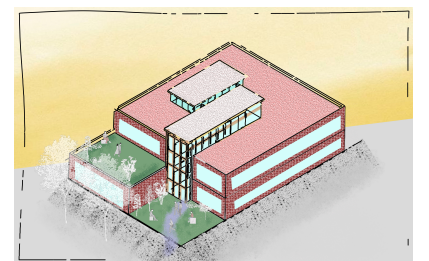
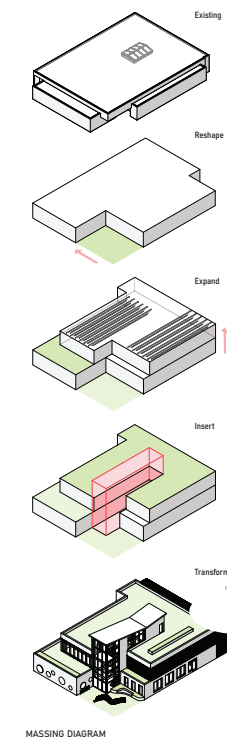




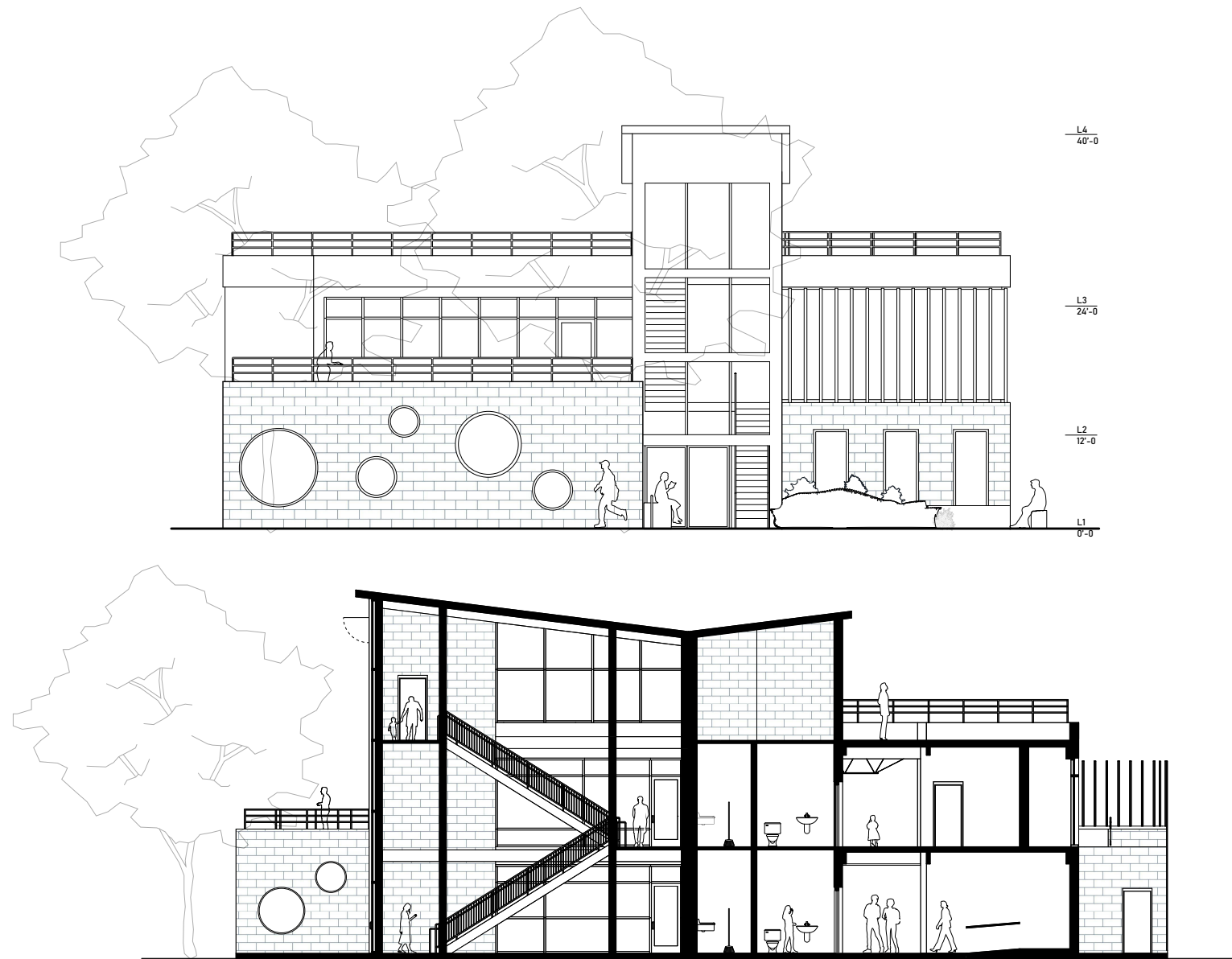
DIGITAL COLLAGE  
EXPLODED DIAGRAM  
PROGRAM DIAGRAM

## Design Process

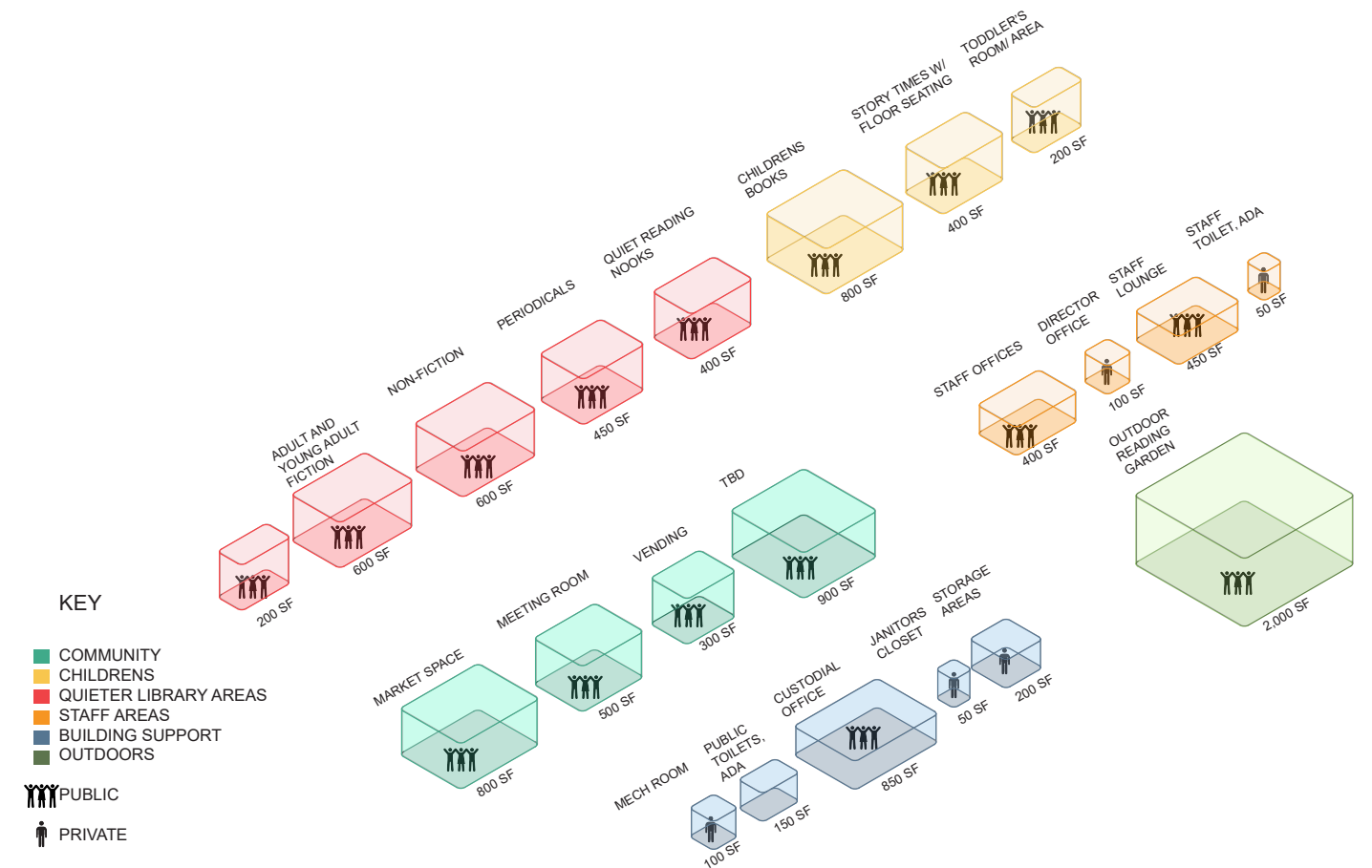
The design for Spring Creek Commons reimagines the existing library as a vibrant and inviting third space for the community. At the heart of the renovation is a skylight tower that enhances visibility, brings natural light deep into the interior, and improves circulation throughout the building. The process diagram on this slide traces the evolution of the concept, showing how the intervention grew from a simple structural addition into a defining spatial gesture. By blending the old with the new, the design honors the library's legacy while positioning it for a more open and connected future.







ELEVATION  
SECTION  
DIGITAL COLLAGE  
FLOOR PLAN  
PROGRAM DIAGRAM







#### Reflection

This project taught me how thoughtful design can transform an overlooked space into a *meaningful destination*. By carving out a plaza at the front, we created a *true third space*. Open, welcoming, and centered around community. The skylight tower became both a visual anchor and a functional entrance, guiding movement and light into the core of the library. An open-air reading garden on the second floor offers moments of pause and reflection, while solar panels on the roof support long-term sustainability. Through this process, I learned how architecture can be responsive, grounded, and deeply intentional.



DETAILED SECTION  
PHYSICAL MODEL  
SKETCH



Thank you!



ASRESTREPODESIGNS@GMAIL.COM  
631-681-0122